

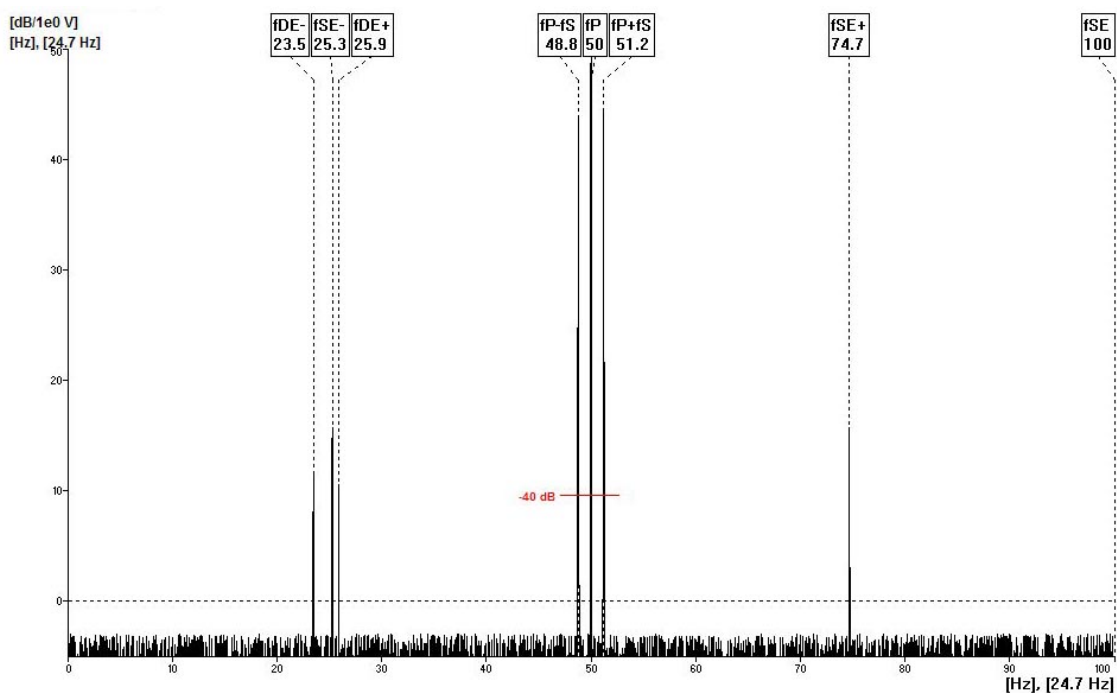


Application Note



DDS 2007 Motor Current Analysis

One of Machine Types, which user can define in DDS 2007, is the asynchronous electric motor. For this type the Marks enables set the cursors with hints to current spectrum defects. For instructions, how to operate with DDS 2007, see the DDS 2007 user guide. For understanding of current analysis see the technical brochures, which are accessible e.g. on the internet.



- fP : speed frequency (50 Hz)
- fS : slip frequency
- fP+fS, fP-fS : sideband frequency, when the difference between fP and these sidebands is less than 40 dB, then rotor bars can be broken
- fSE : static eccentricity (it does not rotate)
- fSE+, fSE- : static eccentricity
- fDE+, fDE- : dynamic eccentricity (it rotates)