

Windows administration for Adash Software

Contents

Hasp driver installation	2
Causes of a HASP key not found	3
User's rights finding	6
MS SQL 2005 Express Installation from the Install CD Adash	8
WARNINGS:.....	8
Installation	8
MSSQL 2005 Express setting (after installation).....	15
Access to the SQL Server (on the local PC)	17
Services administration	18

Hasp driver installation

The HASP key must be connected to the PC before the start of some Adash software. This key is a standard accessory of software, which need it (e.g. DDS 2007). Information about purchased software or its modules are stored in the HASP key which enables using them.

The HASP key is supplied on USB or PARALLEL version. The HASP key is not a product of ADASH company. The manufacturer's web page is: www.aladdin.com. Up-to-date drivers are also available on this web site.



If the HASP key isn't connected to the PC, then the software which need the HASP key not start or start in the demonstration mode (e.g. DDS 2007). Possibilities of software are restricted in this mode. The error messages are being displayed during start of the program. These messages are related to the missing HASP key.

The software is searching for the HASP key immediately after start. Then the program checks information, which are stored in the key.

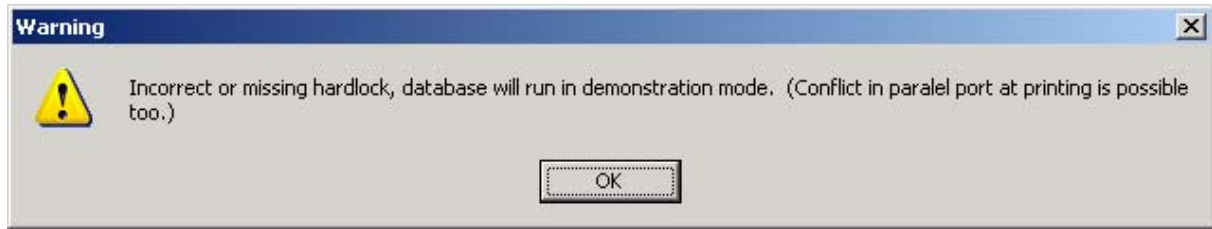
Picture: DDS 2007 search for Hasp Key



If the HASP key is not found, the program displays the error message.



If the program starts in the demonstration mode, then its functions are restricted. If a disallowed function is chosen in this mode then the alert message is displayed again.



Causes of a HASP key not found

1. HASP key is not connected to the PC.
2. The HASP driver is not installed correctly.
3. If the PARALLEL HASP is used, then a conflict can occur with a printer connected to the HASP.
4. HASP key is damaged.

The HASP key is not connected to the PC.

Solution: Connect the HASP key to the PC.

- Connect the USB HASP key to the USB port
- Connect the PARALLEL HASP key to the PARALLEL port



The HASP driver is not installed correctly.

For example reinstallation of DDS to other directory can cause a HASP driver failute.

Solution:

The HASP driver is installed automatically during the first start of the program DDS 2007.

If a driver failure occurs, then reinstall HASP driver. Visit the page www.adash.cz, section **Download - Third parties software - Driver HASP**. Then continue:

1. Download all four files from this section to a directory on your PC. Never erase these files!
2. Start the uninstall.bat
3. Start the install.bat file (double click in any File Manager software).

Confirm successful installation by clicking the OK button in the next window.



Attention !!!

During the HASP driver installation you must be logged on the PC as user with administrator's rights. The installation is running also in the first run of DDS 2007, you must have administrator's rights. Finding of user's right is described in next capitol.

If the PARALLEL HASP is used then a conflict with a printer connected to HASP can occur.

Solution: Disconnect the device (printer) from the PARALLEL HASP.

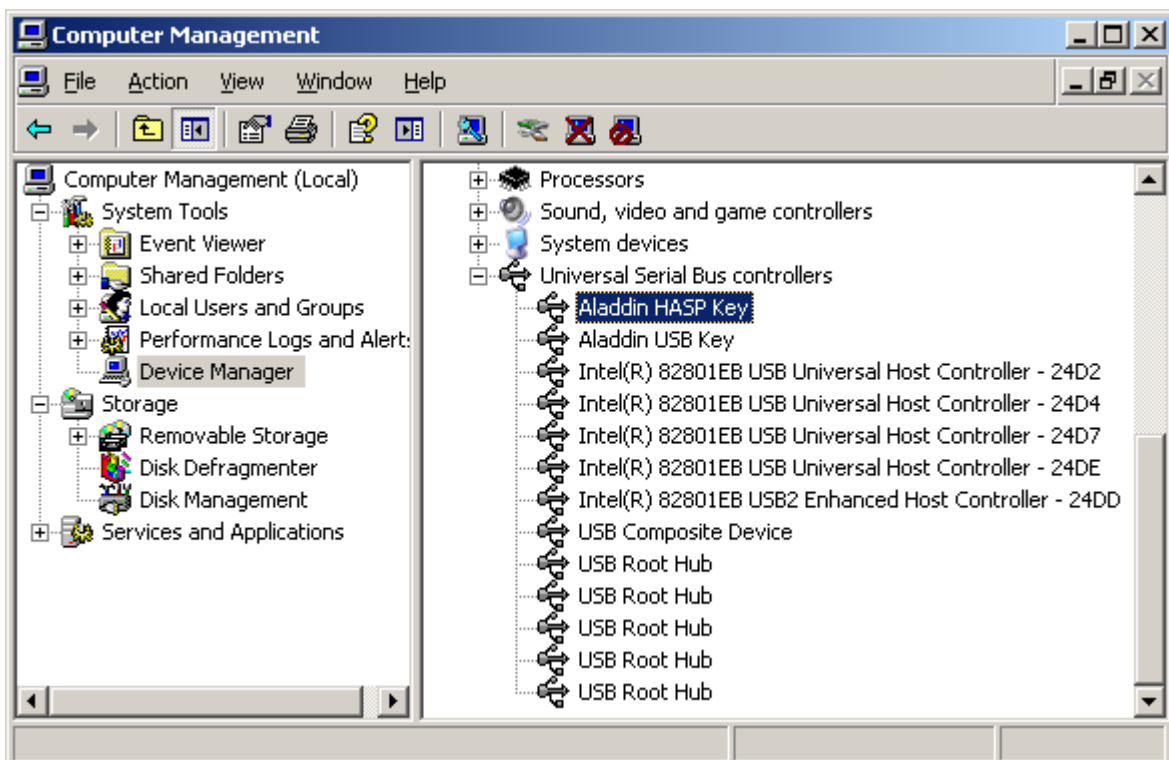
HASP key is damaged

Solution:

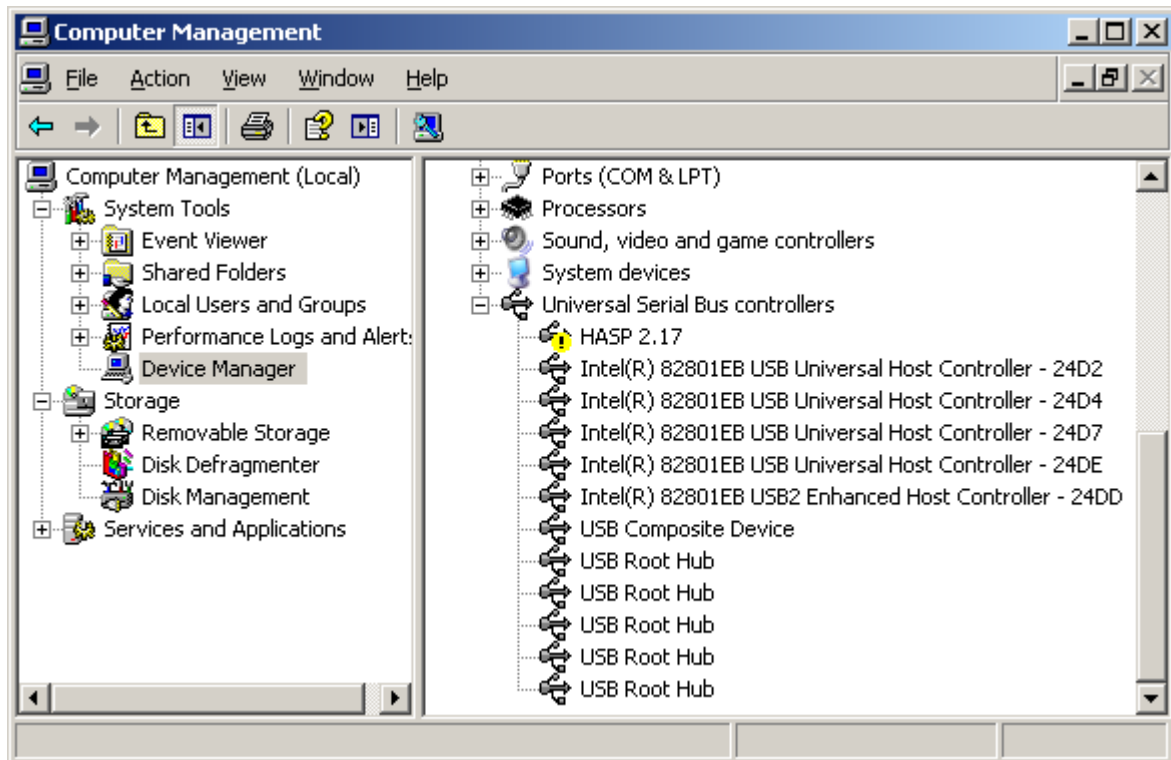
Connect the HASP key to the PC.

- if HASP and its drivers are working, then HASP indication LED must shine and **Computer Management – System Tools – Device Manager – Universal serial bus controllers - Aladdin HASP (USB) key** item must be in the **Device Manager** window.

Device Manager window - click by right mouse button on the **My Computer** icon and choose **Manage** item.



If HASP is OK, but drivers are not installed, then Windows XP find USB HASP key and offer driver installation. HASP indication LED will not shine. The **HASP + version** item must be in the **Device Manager** window.



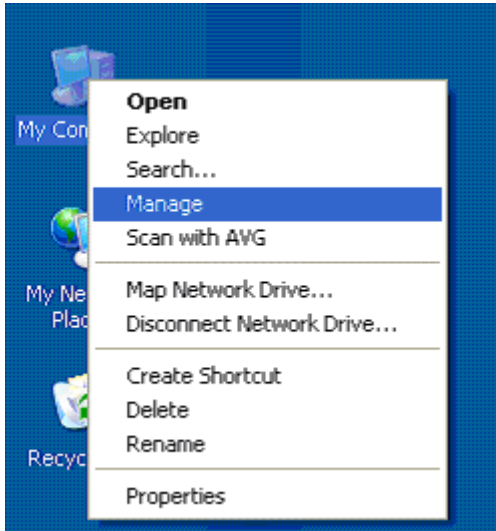
If Windows XP cannot find the HASP key and if the HASP key is not displayed in the **Device Manager** window then HASP key is probably damaged.

*NOTE: Installing DDS 2007 application and network dongle on the same computer may significantly slow down the application start. It is recommended to install the network dongle on one computer (server) and DDS 2007 on other computers (workstations). To speed up DDS 2007 application startup add parameter **PARAM_007 = 1** to the DDS2007.ini file.*

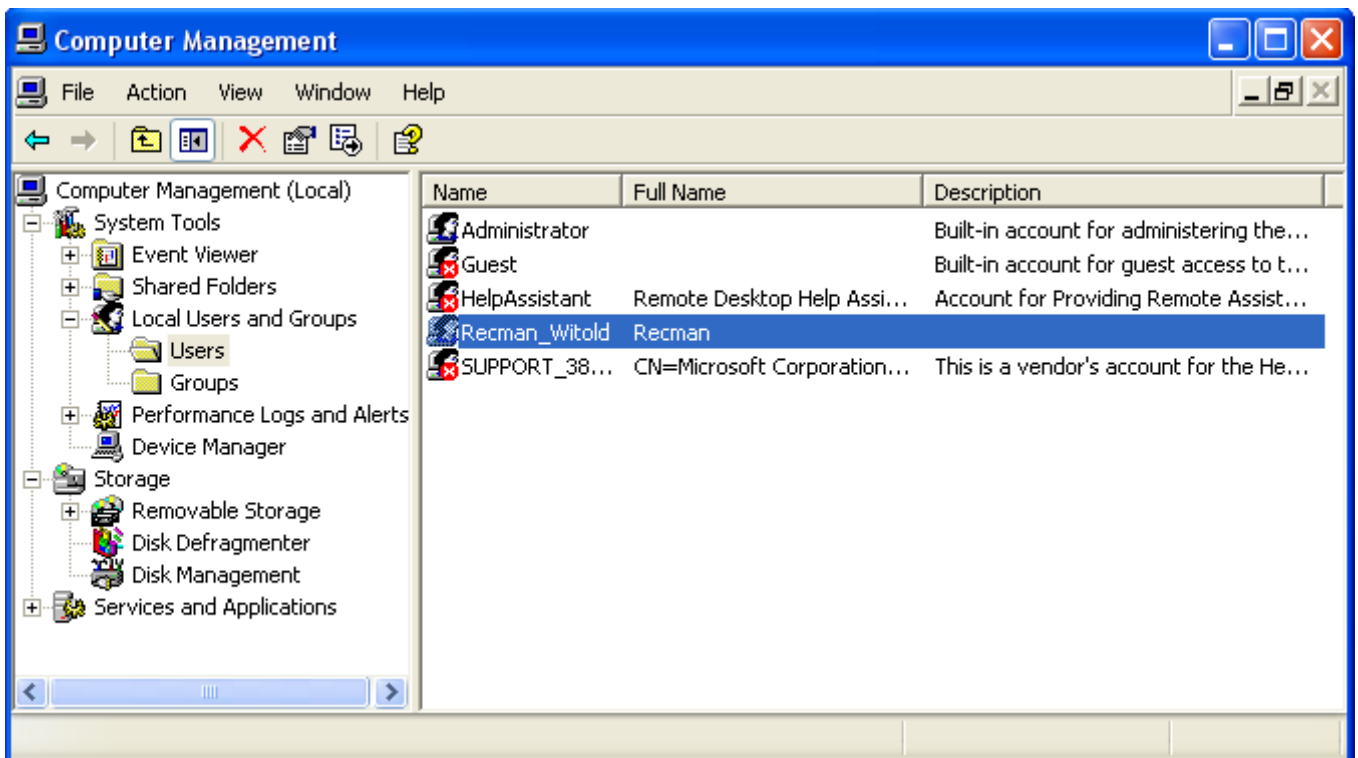
*[GlobalOptions]
PARAM_007=1*

User's rights finding

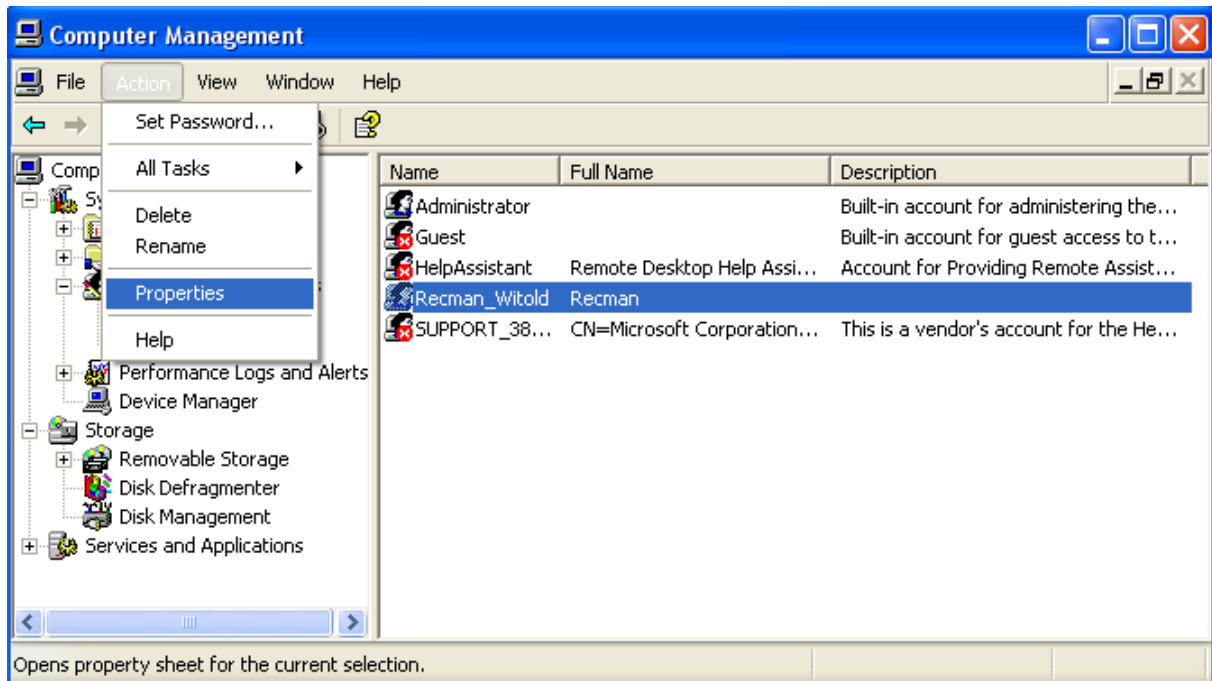
Right-click on **My computer** icon located on the desktop. Select the **Manage** item from the menu.



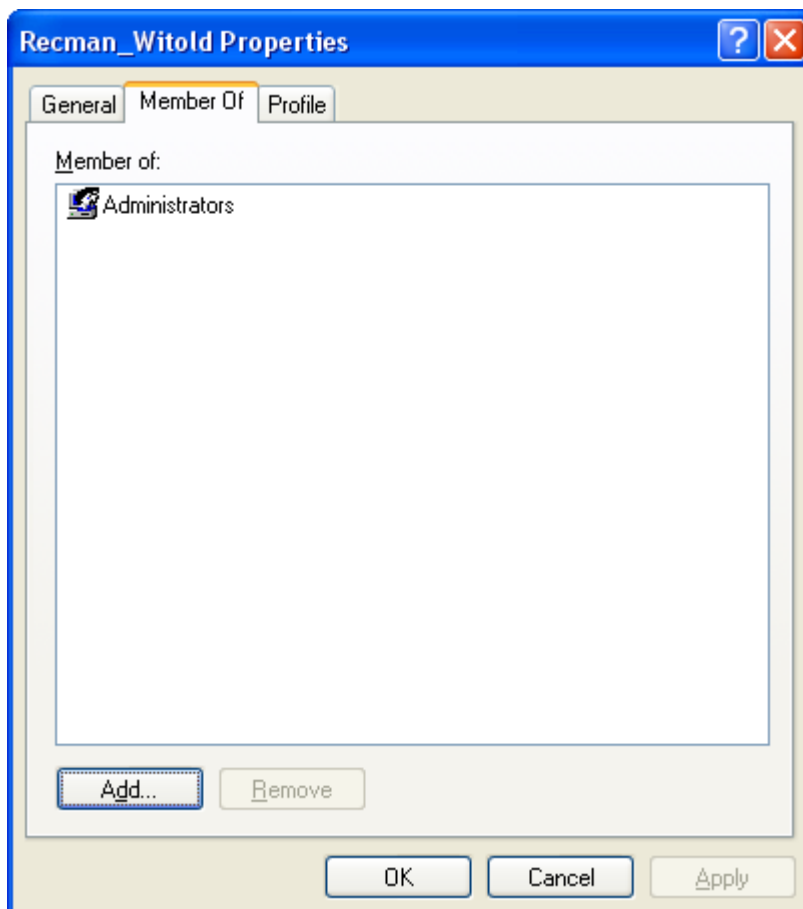
The Computer Management window will be displayed. Activate the **Local users and groups - Users** item. In the right-hand side of the window activate the user name you want to check.



From the Main menu select **Action - Properties** item.



The **User properties** window will be displayed. In this window select the **Member of** item. The user must be a member of **Administrators** group.



MS SQL 2005 Express Installation from the Install CD Adash

WARNINGS:

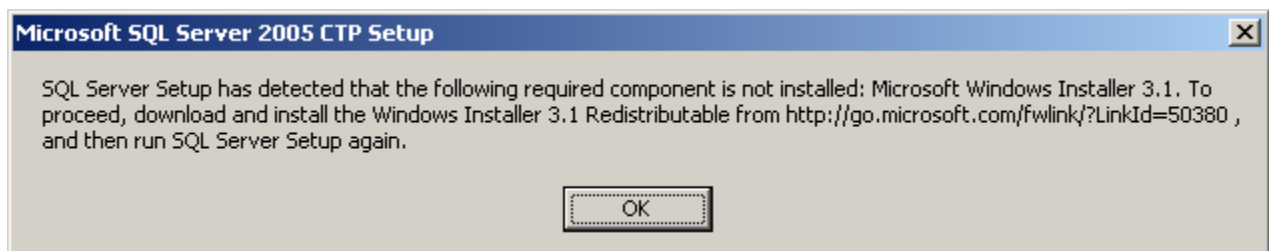
Check whether your computer fulfills minimal requirements:

- **Win2000 - Service Pack 4**
- **WinServer2003 - Service Pack 1**
- **WinXP - Service Pack 2**
- **192MB RAM, 525 MB HDD**
- **Installation can be start from local harddrive, LAN or other source. Process of installation will be the same, location of installation files will be different.**

Installation

1. From the directory **Software_other\SQLServer** run installation file **SQLEXPRESS.EXE**.

2. If this message window shown,



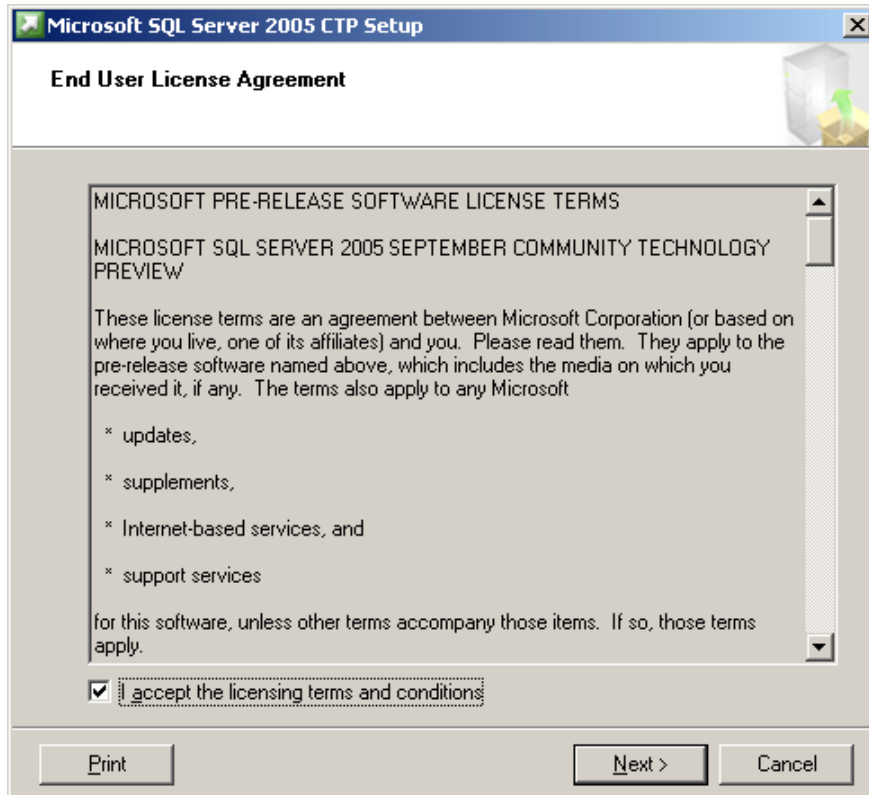
then install **Microsoft Windows Installer 3.1** and start **MS SQL Server** installation again. Installation file is in directory **Software_other\WindowsInstaller\WindowsInstaller-KB893803-v2-x86.exe**.

3. If this message window shown,

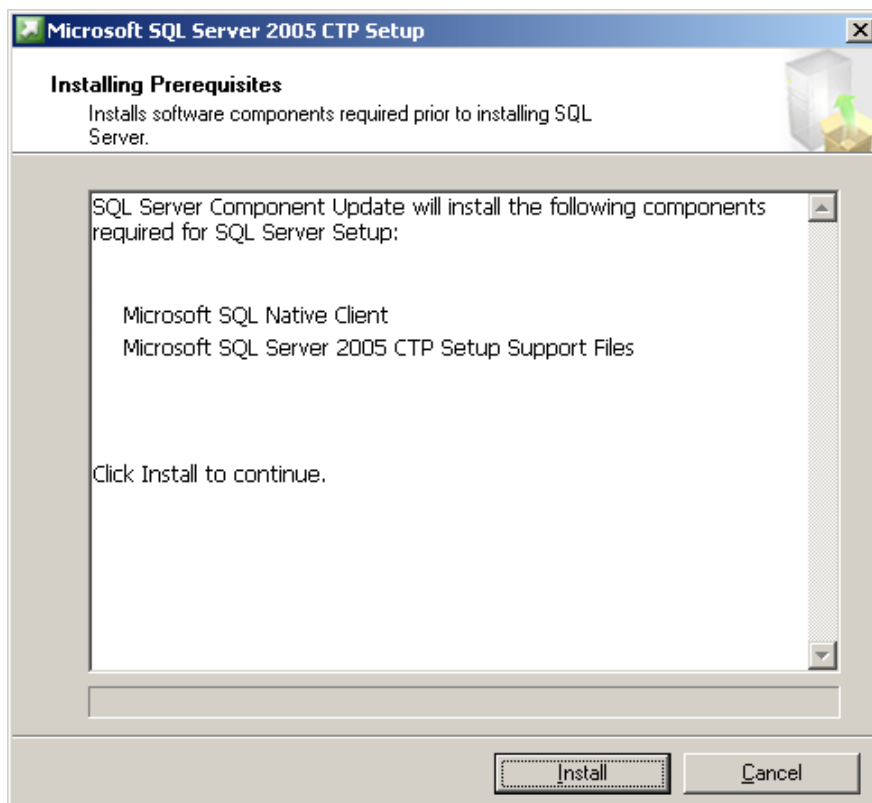


then install **Microsoft .Net Framework 2.0** and start **MS SQL Server** installation again. Installation file is in directory **Software_other\DotNet 2.0\dotnetfx.exe**.

4. Check the checkbox **I accept the licensing terms and conditions** and press **Next**.



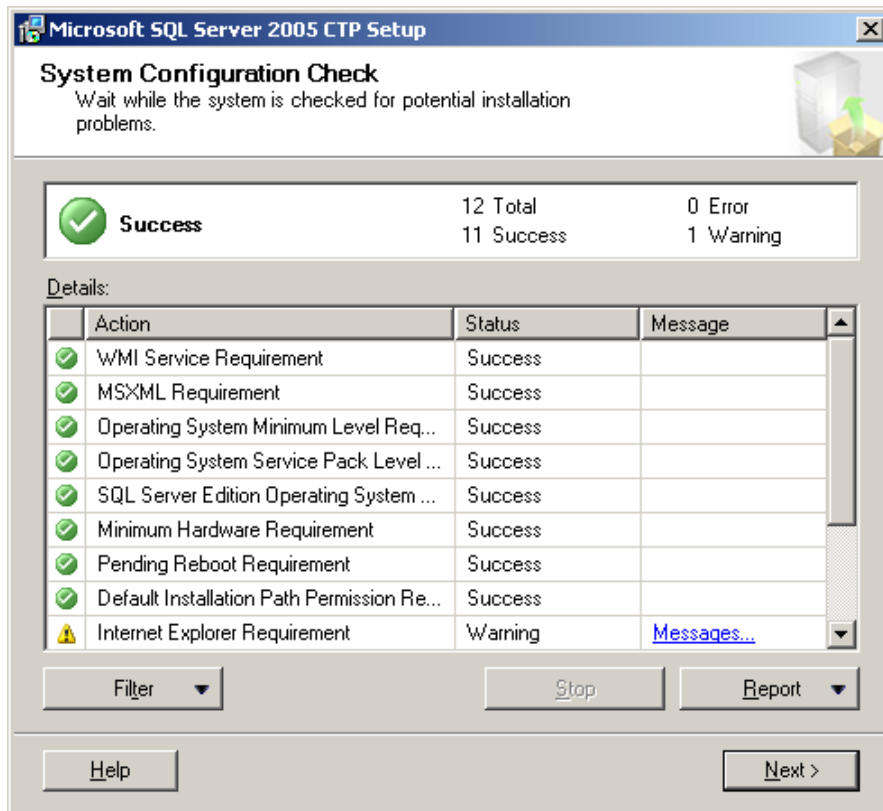
5. Press **Install**.



6. Press **Next**.

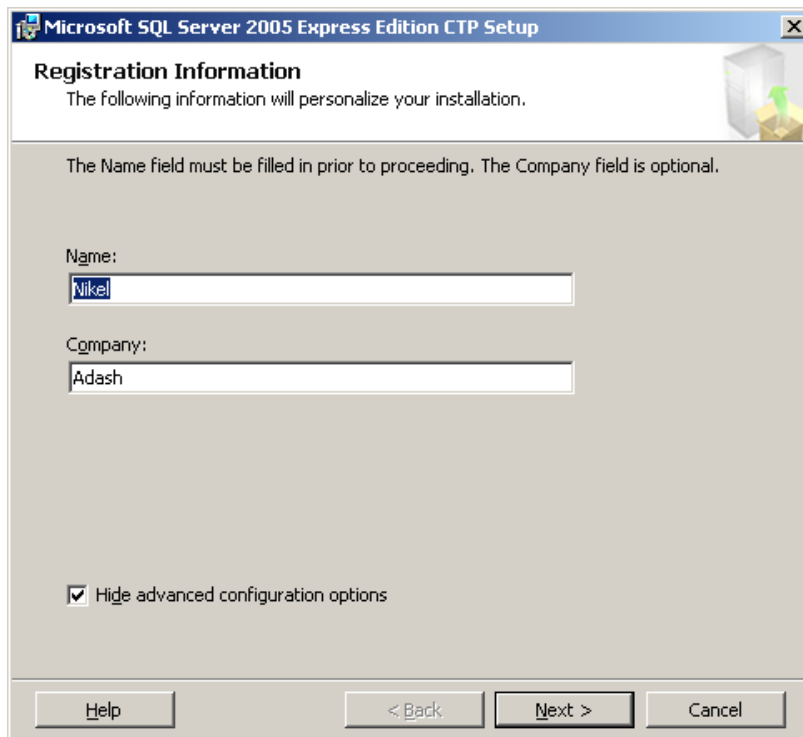


7. Press **Next**.

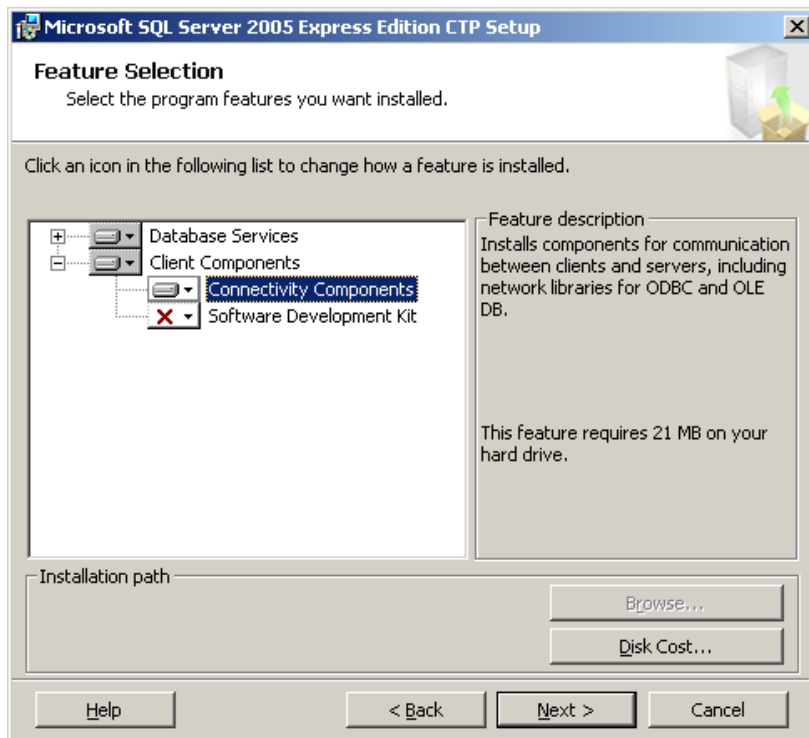


8. Fill the **Name** and **Company**, check the checkbox **hide advanced configuration options** and press **Next**.

Note. You do not need to remember these entries.

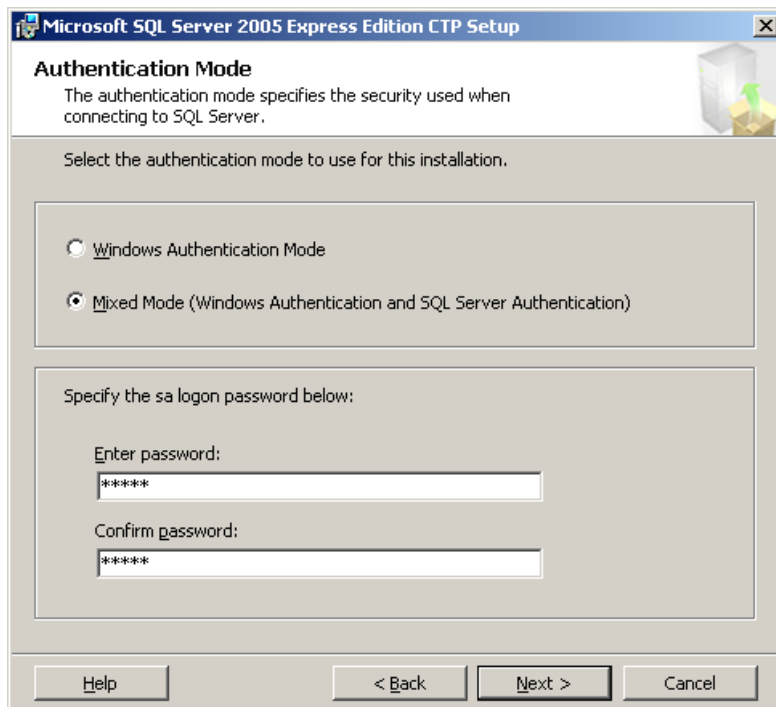


9. Choose required components and press **Next**.

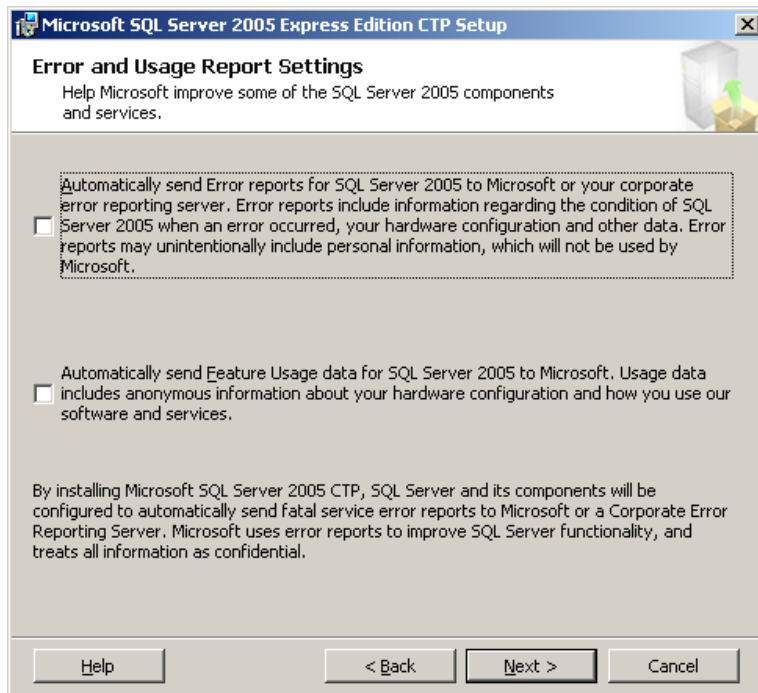


10. Set the authentication mode to **Mixed Mode** (see pic.), fill and confirm password for **sa** user (system administrator). Adash implicit password is **adash**, the **sa** password cannot be used.

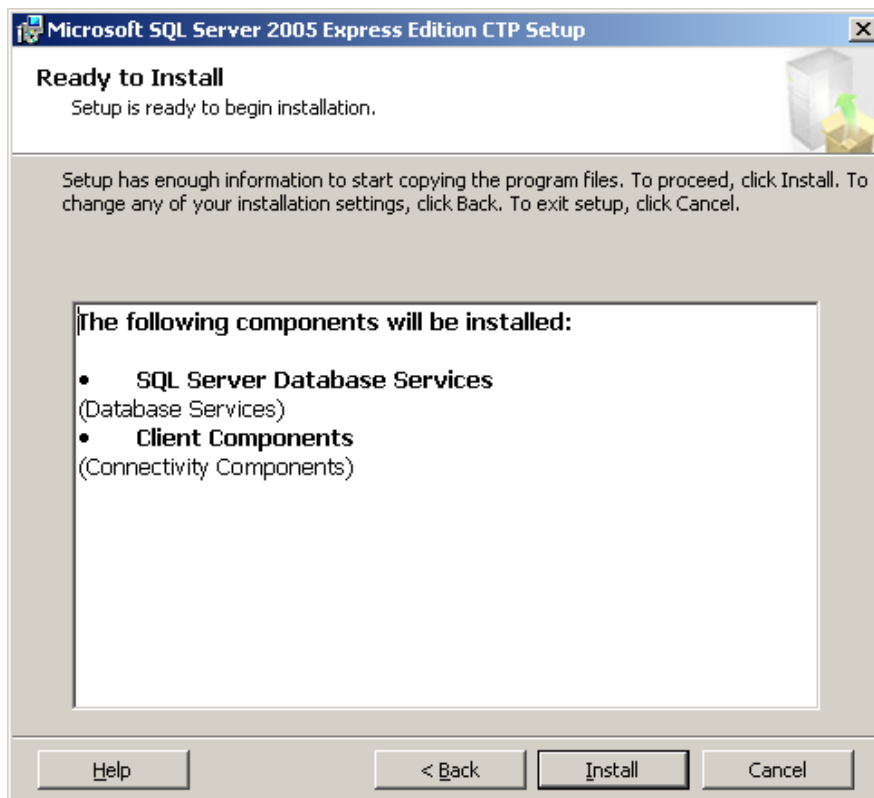
Attention!!! You must remember this password!!! It will be used to connect to SQL server, to create database and appropriate ODBC source.



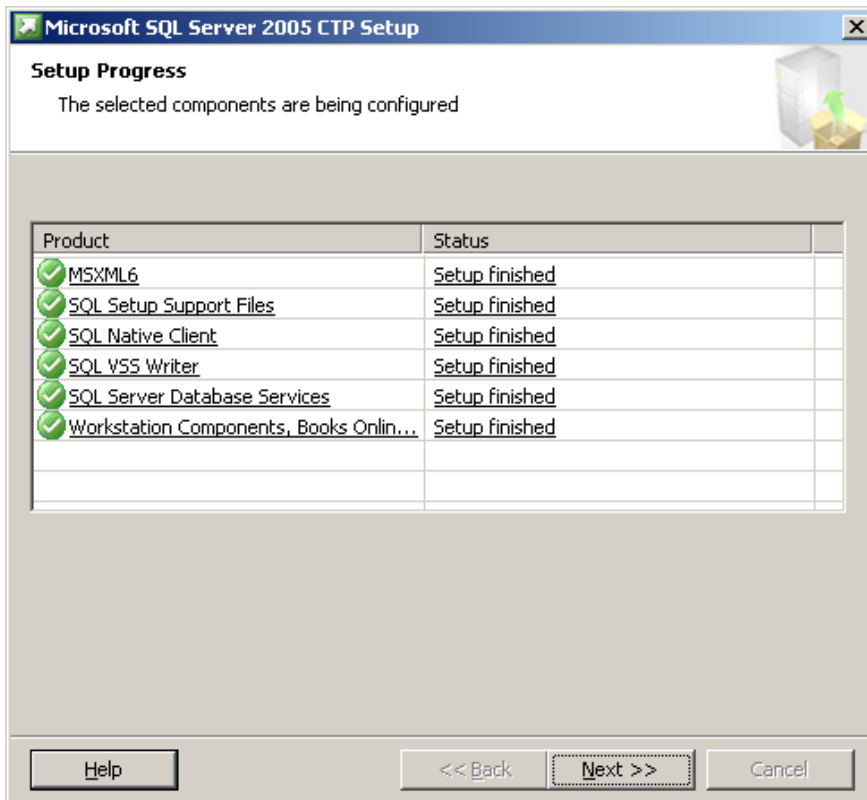
11. Don't check checkbox in this window, press **Next**.



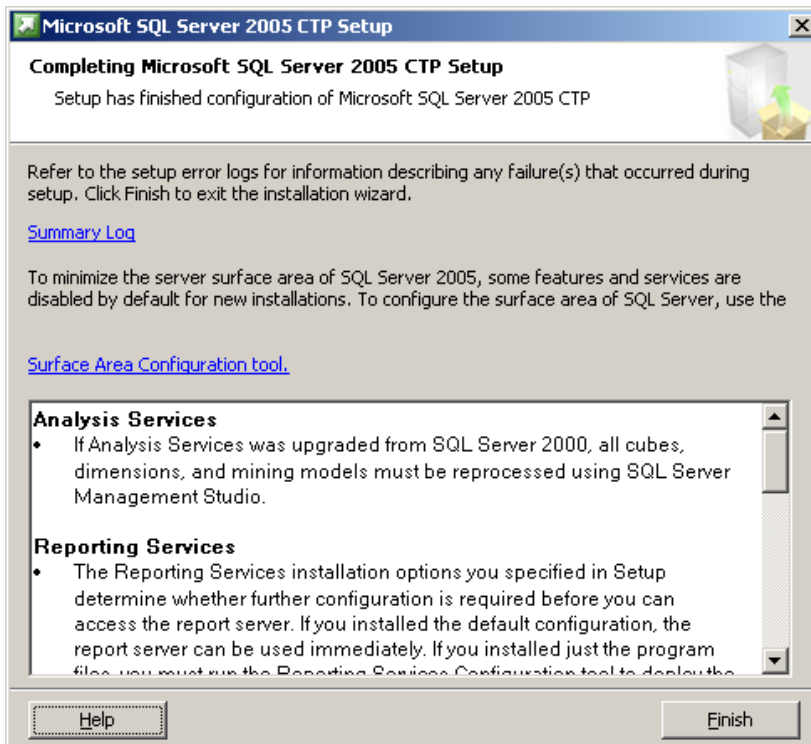
12. Press **Install**.



13. Press **Next**.



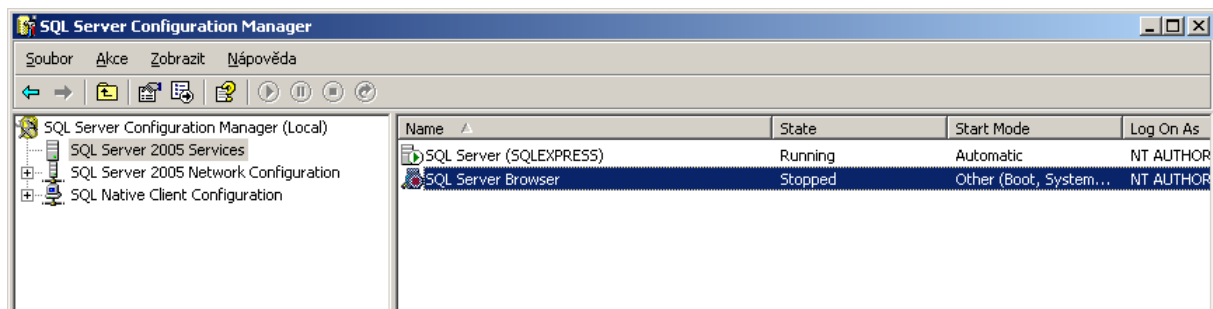
14. Press **Finish**.



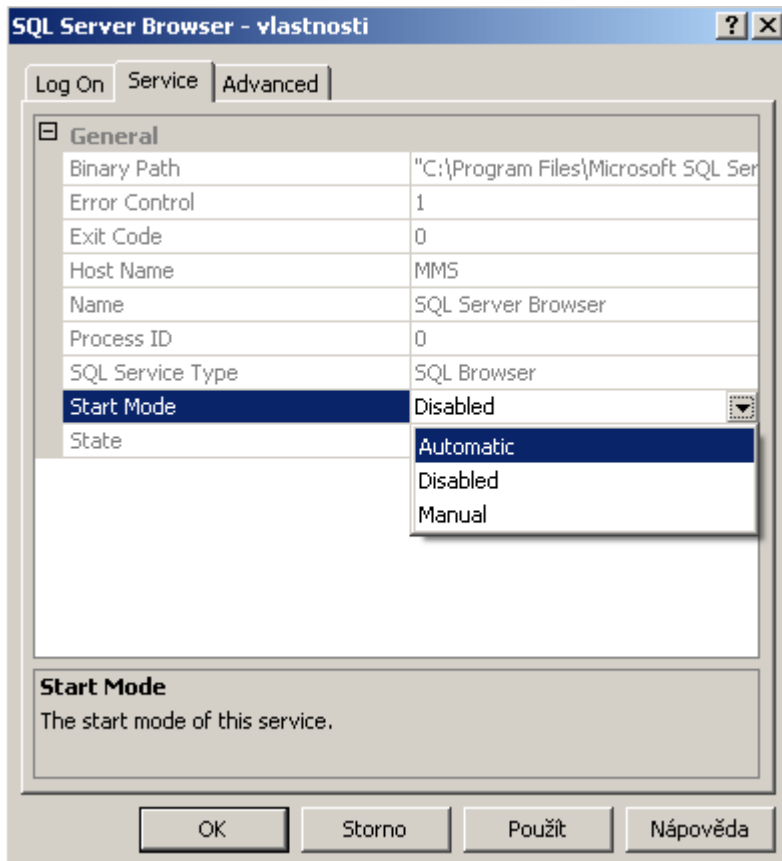
MSSQL 2005 Express setting (after installation)

These settings are required only if the SQL server runs on other PC at LAN (no for **(local)**) and **you need connect the SQL Server by LAN**. Connection to MS SQL Server by LAN is impossible after the SQL installation process.

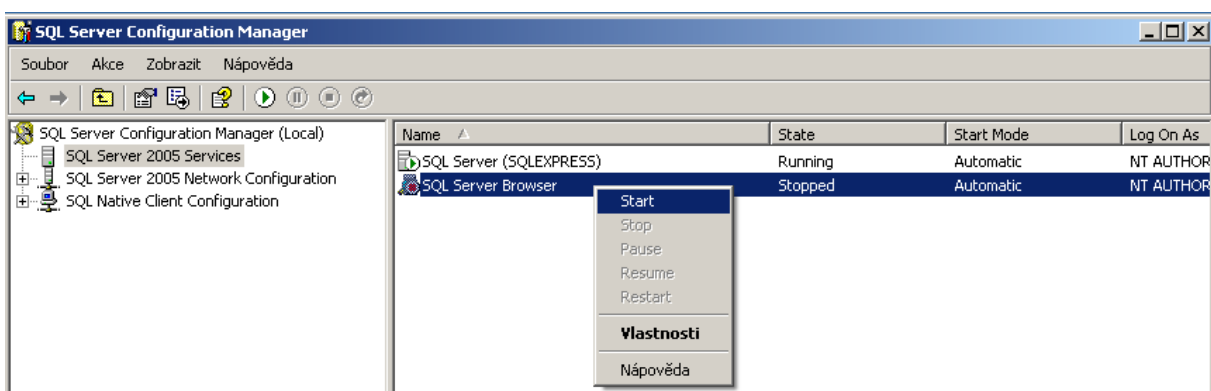
1. In the menu **Start - Programs - Microsoft SQL Server 2005 - Configuration Tools** choose the **SQL Server Configuration Manager** item.
2. Activate **SQL Server 2005 Services** item in the left window. In the right window activate **SQL Server Browser** item and check:
 - **State** must be **Running**
 - **Start Mode** must be **Automatic**If these setting aren't OK, then you must change it.



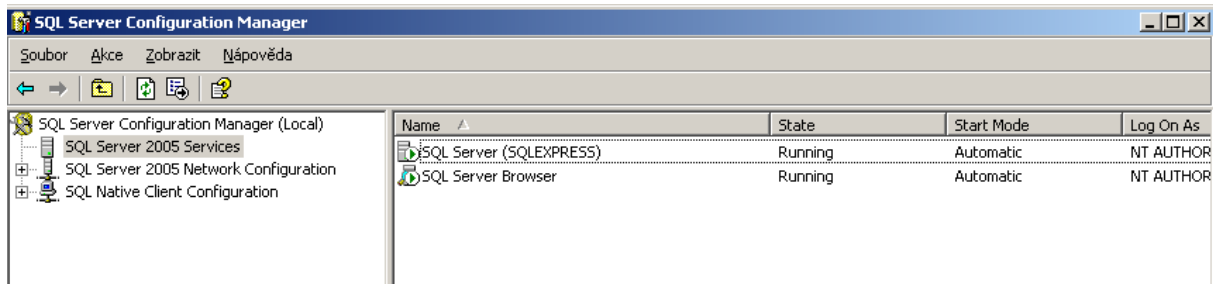
- Open the dialog **SQL Server Browser - properties** by double-click on **SQL Server Browser** item.
In this dialog:
 - activate **Service** page
 - choose **Start Mode** item
 - set it to **Automatic**
 ...- press **OK**



- Click on the **SQL Server Browser** by right-mouse button and from menu choose **Start** item.



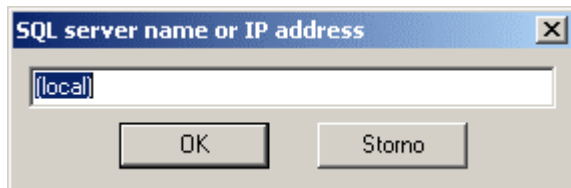
5. Now you can connect this SQL server by LAN.



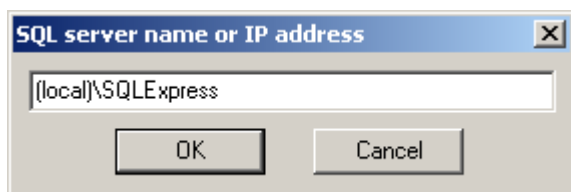
Access to the SQL Server (on the local PC)

If you manage the MS SQL server, then the authentication dialogue will show. On the same PC can be installed several instance of MS SQL Server. These instances must be distinguishable. A standard installation is labeled **(local)\SQLEXPRESS**. In the authentication dialogue is always **(local)**. You must retype it.

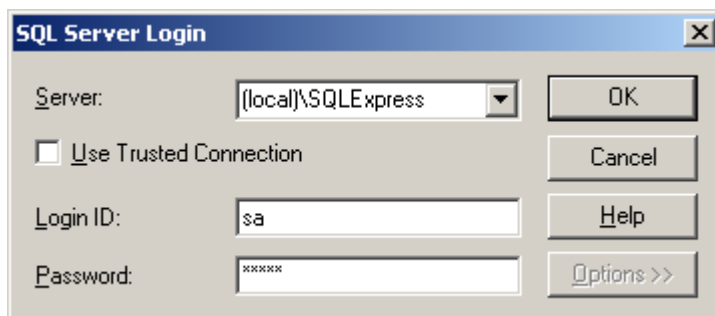
Default dialog:



SQL Express server name:



Logon as **system administrator - sa**
(password was created with instance)

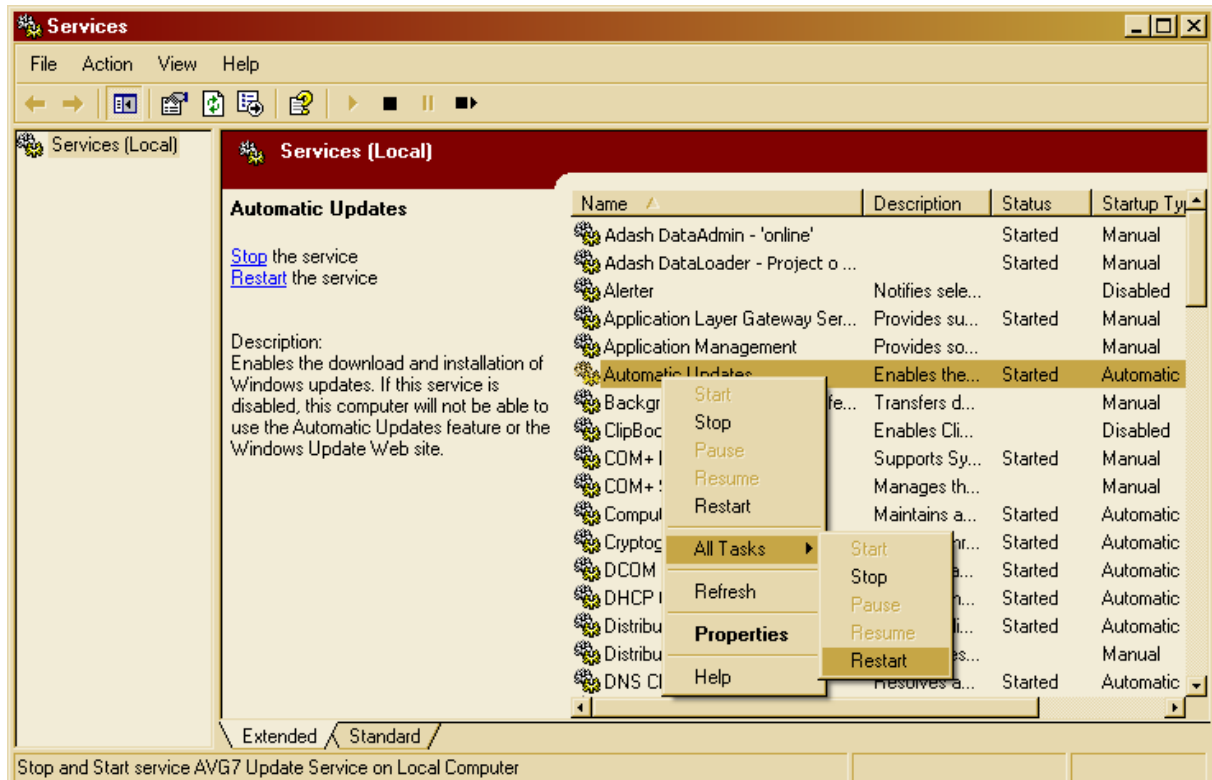


Services administration

Services are programs which run invisibly in the background. Difference between service and program is that services load and start running whether or not anyone logs into the computer, unlike a program that is launched from the Startup Folder under All Programs.

Services administration is possible from the **Services** window. To open this window click on the **Start menu - Run**, in **Run box** type **services.msc**.

Changing services settings can be dangerous. Incompetent services administration can cause damage of Windows!!!



Attention!!! If you administrate **DataLoader** and **DataAdmin** services by **Services** window, then close **A3600Setup** program (window **Data Manager 2007** in **DDS 2007** program). Conversely, if you administrate these services by **A3600Setup** or by **DDS 2007**, close the **Services** window. You avoid service administration conflict.

By this manner you keep clear of service administration conflict!!!