



User's guide



A3600 BDL (Binary Data Download)

Application:

- ☞ This is a simple program for transferring data from on-line monitoring system A3600.
- ☞ Export of measured data to file.

Vlastnosti:

- ☞ Hardware requirements: Intel® Pentium® or compatible, CD ROM, 64 MB RAM, 2 MB hard disk space, SVGA or higher resolution monitor (800x600, 256 colour)
- ☞ Microsoft® Windows® 95, 98, NT, 2000, XP

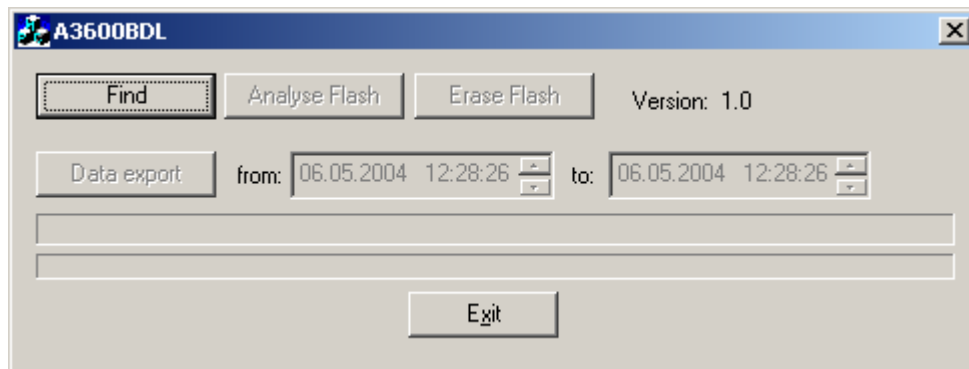
Program control

Application start

Run A3600BDL by doubleclick on A3600BDL.exe icon.

User interface description

After starting the program, the screen of the user interface program appears.

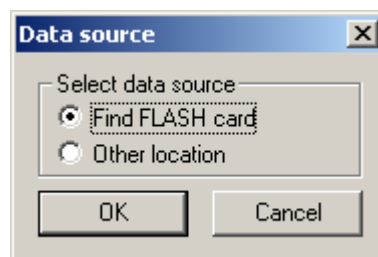


The user interface consists of dialog with these function keys:

Find

Select the data source to be used. There are two options:

- **Flash card** (from Adash 3600-MEM module)
- Measured **data file** stored on hard disk (file with .mem extension)



Analyse Flash

After data source selection and before data export, we have to analyse this data with Analyse Flash button.

Erase Flash

Erases all data on Flash Card.

Data export

Exports measured data from selected time range. Default name of export file is Data3600_ex.mem. This file can be imported to DDS2000 by standard way.

