



User's guide



Connection of the A4101/JET instrument to the DDS2000 application

Applications :

- 📁 Data transfer from an A4101/JET instrument
- 📁 Route transfer from/to the DDS2000 application to/from instrument

Ref: 03192003 OS

Contents:

Connecting A4101/JET instrument to DDS2000 application4
Connecting instrumtn to PC.....4
Route - term definition4
Transfer of an engine measurement to the instrument interface window4
Transfer of the measured data to DDS application.....5
A4101JET engine report print.....6

Connecting A4101/JET instrument to DDS2000 application

Connecting instrument to PC

In the instrument set a serial communication cable is delivered that serves to transfer data between the computer and the measurement instrument. Connect the cable into any PC serial port that is not used by operating system. Connect the cable into the instrument by the connector signed RS232.

Route - term definition

Route is a set of machines on which we want to provide a measurement. The **Machine** term definition is explained in the **Tree** and **Edit DDS tree** chapters. Each machine contains measurement places and each measurement place contains data cells. The route is thus a structured list. First look at a route is a list of machines. Each of these machines can be open similarly as a DDS tree branch. After opening a list of measurement places is displayed (see definitions in the **Edit DDS tree** chapter). Each measurement place has data cells connected, that represent real measurements (see the **Data cells** chapter).

Transfer of an engine measurement to the instrument interface window

In the main menu of the DDS application select the command **Tools / Connect instrument / A4101 JET**. The empty communication window **A4101JET** will appear. In the tree window of the DDS application drag the desired tree node (in most cases the engine record, **M** icon) by the mouse and move the node to the communication window **A4101JET**. In the list area of the communication window will appear the complete list of the measured items.

Double clicking left button of the mouse or pressing Enter key will expand or collapse any node of the route in the list area of the com. window. User can navigate by cursor keys in the route too.

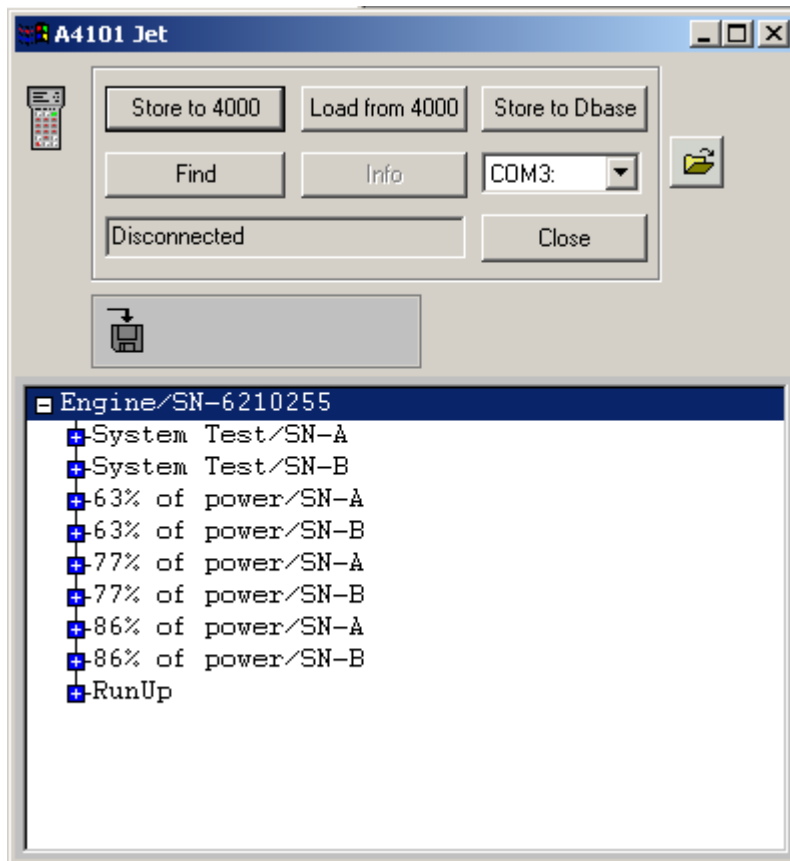


Fig.1. route list in the communication window

The **A4101JET** communication window contains these items:

- text field indication current progress or state of the communication
- button **Find**; when pressed application tries to find instrument on the given serial port. This button must be pressed **before** any other actions/transfers are taken
- **Store to A4101JET**. This button starts transfer of the route **TO** instrument
- **Load from A4101JET**. This button starts transfer of measured route **FROM** instrument to application
- **Com port selection**. This combo box enables users to select correct serial port of the PC where the instrument is connected. The correct port must be selected once at the start of the application before any transfers are issued. If the com port was once selected correctly, the application remembers the setting for future transfer, so no resetting is needed.

Transfer of the measured data to DDS application

1. Power-up the instrument, stay in the main menu of the instrument
2. Open communication window of the A4101JET instrument by menu command **Tools/Connect Instrument/A4101JET**
3. If not selected anytime before, select correct **COM port** where the instrument is connected to PC
4. Click the **Find** button, message **Instrument found** must appear in the status box

5. Click the **Load from A4101JET** button. The transfer of the measured data will be started, the status will indicate the progress of the transfer.
6. when the transfer is successfully finished, click **Store to Dbase** button; all measured data will be stored in the correct database; user will be prompted for the **plane number** and **operation hours** before store to database will issued.

Before storing data to database the measured items can be inspected by clicking right button of the mouse pointing over desired item of the route.

A4101JET engine report print

The application enables user to print special type of the report designed especially for the engine measurements.

User first has to select the desired engine tree node in the DDS tree. Then by clicking right button of the mouse still pointing to the desired engine the context menu will appear. User can the select the context menu item **Report / JET report**, which will drive application to open file selection dialog. Here the user selects name and placement of the text report will be generated. After selecting **OK** button the report will be generated and showed in the default system text editor.